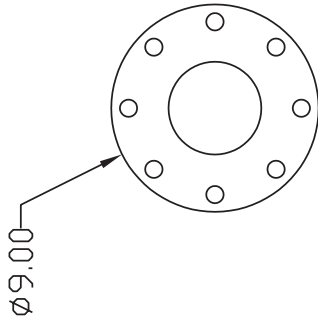
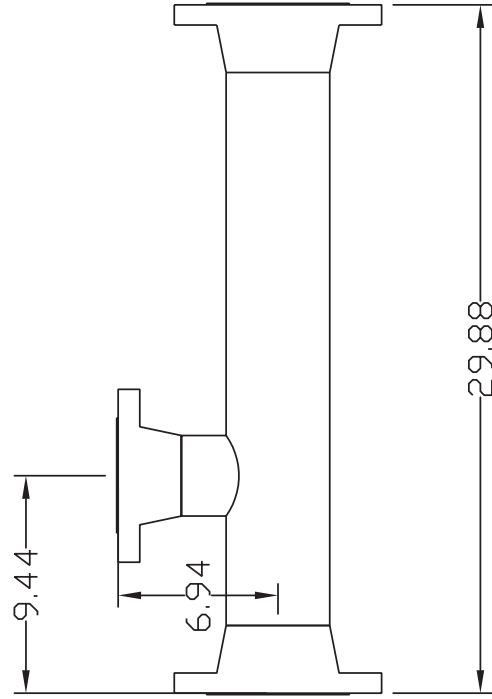
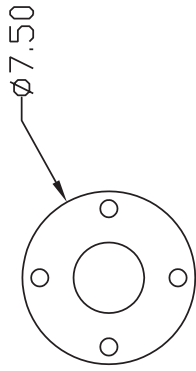



- NOTES:
1. INLET AND OUTLET: 4" FLANGE 150# B16.5 SCH 40
  2. SUCTION PORT: 3" FLANGE 150# B16.5 SCH 40
  3. MATERIAL OF CONSTRUCTION: TYPE 316L STAINLESS STEEL



 <b>Mazzei</b> <sup>®</sup> Mazzei Injector Company, LLC 500 Rooster Drive, Bakersfield, CA 93307 Tel: 661.363.6500 Fax: 661.363.7500		DATE	03-23-06	TITLE	SS-4091-F
		DRAWN BY	JPB	Single 3" Suction	
REVIEWED BY	RHM/JRJ	NUMBER	JPB-3-4091	SIZE	REV.
SCALE	NTS				
MATERIAL: SEE NOTES				PAGE (1) OF (1)	